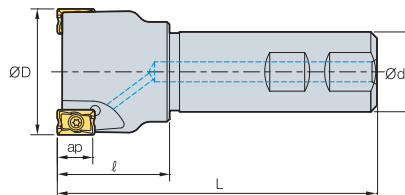


RM4PS3000



AA
90°
• AR : -6°
• RR : -39°~16°

(MM)

Обозначение		ØD	Ød	ℓ	L	ap	
RM4PS 3014HR-S16	1	14	16	23	90	9.0	0.11
3016HR-S16	1	16	16	25	90	9.0	0.11
3018HR-S16	2	18	16	23	90	9.0	0.12
3020HR-S20	2	20	20	30	100	9.0	0.21
3020HR-S20M	3	20	20	30	100	9.0	0.21
3025HR-S25	2	25	25	35	115	9.0	0.38
3025HR-S25M	3	25	25	35	115	9.0	0.38
3032HR-S32	3	32	32	40	125	9.0	0.69
3032HR-S32M	4	32	32	40	125	9.0	0.7
3040HR-S32	4	40	32	42	130	9.0	0.86
3040HR-S32M	5	40	32	42	130	9.0	0.85
3040HR-S40	4	40	40	42	130	9.0	1.17
3040HR-S40M	5	40	40	42	130	9.0	1.17
3040HR-S42	4	40	42	42	130	9.0	1.26
3040HR-S42M	5	40	42	42	130	9.0	1.25
3050HR-S32	5	50	32	45	135	9.0	1.06
3050HR-S32M	7	50	32	45	135	9.0	1.05
3050HR-S40	5	50	40	45	135	9.0	1.38
3050HR-S40M	7	50	40	45	135	9.0	1.37
3050HR-S42	5	50	42	45	135	9.0	1.48
3050HR-S42M	7	50	42	45	135	9.0	1.48

Применяемые СМП

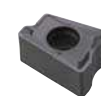
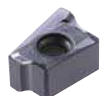
LNEX-MF

LNEX-MM

LNEX-MA

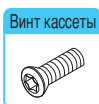
LNMX-MF

LNMX-MM



Обозначение	Тв. сплав с покрытием								Кермет			Тв. сплав				Стр.	
	NCM325	NCM335	NC5330	PC3500	PC5300	PC3545	PC9530	PC6510	PC215K	PD2000	CN2000	CN20	CN30	H01	G10		ST30A
LNEX 100605PNR-MF				●	●			●									
LNMX 100605PNR-MF				●	●			●									
LNEX 100605PNR-MM				●	●			●									
LNMX 100605PNR-MM				●	●	●	●	●									
LNEX 100608PNR-MF				●				●									
LNMX 100608PNR-MF				●				●									
LNEX 100608PNR-MM				●				●									
LNMX 100608PNR-MM				●				●									
LNEX 100605PNR-MA													●				
LNEX 100605PNL-MM								●									
LNMX 100605PNL-MM				●				●									

Комплектующие



Винт кассеты



Ключ

ФТКА0307

TW09S