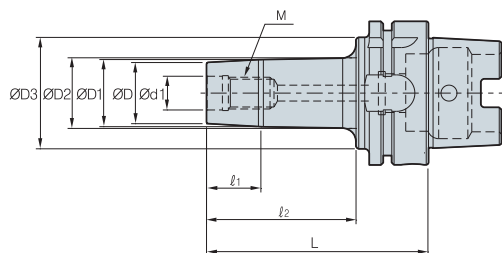


HSK63A/HSK100A



Обозначение		$\varnothing D$	$\varnothing D_1$	$\varnothing D_2$	$\varnothing D_3$	$\varnothing d_1$	L_1	L_2	L	M
HSK63A	MAT-M06-061	11	11.7	27	40	6.5	5	25	61	06*1.0
	MAT-M06-076	11	11.7	27	40	6.5	5	40	76	06*1.0
	MAT-M06-091	11	11.7	27	40	6.5	5	55	91	06*1.0
	MAT-M08-066	14.5	15.7	30.5	44	8.5	7	30	66	08*1.25
	MAT-M08-081	14.5	15.7	30.5	44	8.5	7	45	81	08*1.25
	MAT-M08-096	14.5	15.7	30.5	44	8.5	7	60	96	08*1.25
	MAT-M10-071	18	19.7	34	50	10.5	10	35	71	10*1.5
	MAT-M10-086	18	19.7	34	50	10.5	10	50	86	10*1.5
	MAT-M10-101	18	19.7	34	50	10.5	10	65	101	10*1.5
	MAT-M12-076	23	24.7	36.5	55	12.5	10	40	76	12*1.75
	MAT-M12-091	23	24.7	36.5	55	12.5	13	55	91	12*1.75
	MAT-M12-106	23	24.7	36.5	55	12.5	13	70	106	12*1.75
HSK100A	MAT-M16-076	29	31.7	38.5	55	17	13	40	76	16*2.0
	MAT-M16-091	29	31.7	38.5	55	17	13	55	91	16*2.0
	MAT-M16-106	29	31.7	38.5	55	17	13	70	106	16*2.0
	MAT-M06-074	11	11.7	15	40	6.5	5	35	74	06*1.0
	MAT-M06-089	11	11.7	15	40	6.5	5	50	89	06*1.0
	MAT-M06-104	11	11.7	15	40	6.5	5	65	104	06*1.0
	MAT-M08-079	14.5	15.7	20	45	8.5	7	40	79	08*1.25
	MAT-M08-094	14.5	15.7	20	45	8.5	7	55	94	08*1.25
	MAT-M08-109	14.5	15.7	20	45	8.5	7	70	109	08*1.25
	MAT-M10-084	18	19.7	25	55	10.5	10	45	84	10*1.5
	MAT-M10-104	18	19.7	25	55	10.5	10	65	104	10*1.5
	MAT-M10-119	18	19.7	25	55	10.5	10	80	119	10*1.5
MAT-M12-094	23	24.7	33	65	12.5	10	55	94	12*1.75	
MAT-M12-109	23	24.7	33	65	12.5	13	70	109	12*1.75	
MAT-M12-124	23	24.7	33	65	12.5	13	85	124	12*1.75	
MAT-M16-094	29	31.7	41	85	17	13	55	94	16*2.0	
MAT-M16-109	29	31.7	41	85	17	13	70	109	16*2.0	
MAT-M16-124	29	31.7	41	85	17	13	85	124	16*2.0	

