

# Оправки для сменных фрезерных головок (МАТ)

## МАТ-С (Твердосплавный корпус)

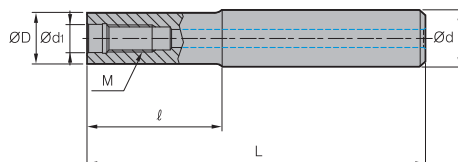


Рис. 1

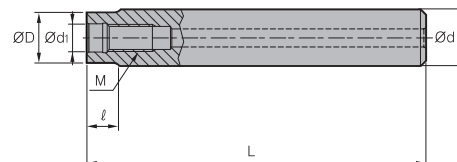


Рис. 2

(мм)

Обозначение	ØD	Ød	Ød <sub>1</sub>	ℓ	L	M	Рис.
<b>МАТ</b> M08-080-S16S-C	14.5	16	8.5	80	150	M08	1
M08-110-S16S-C	14.5	16	8.5	110	180	M08	1
M08-150-S16S-C	14.5	16	8.5	150	250	M08	1
M08-010-S16S-C-150	14.5	16	8.5	10	150	M08	2
M08-010-S16S-C-180	14.5	16	8.5	10	180	M08	2
M08-010-S16S-C-250	14.5	16	8.5	10	250	M08	2
M10-090-S20S-C	18.0	20	10.5	90	170	M10	1
M10-110-S20S-C	18.0	20	10.5	110	200	M10	1
M10-175-S20S-C	18.0	20	10.5	175	300	M10	1
M10-010-S20S-C-170	18.0	20	10.5	10	170	M10	2
M10-010-S20S-C-200	18.0	20	10.5	10	200	M10	2
M10-010-S20S-C-300	18.0	20	10.5	10	300	M10	2
M12-090-S25S-C	22.5	25	12.5	90	170	M12	1
M12-110-S25S-C	22.5	25	12.5	110	200	M12	1
M12-175-S25S-C	22.5	25	12.5	175	300	M12	1
M12-015-S25S-C-170	22.5	25	12.5	15	170	M12	2
M12-015-S25S-C-200	22.5	25	12.5	15	200	M12	2
M12-015-S25S-C-300	22.5	25	12.5	15	300	M12	2
M16-090-S32S-C	28.5	32	17.0	90	180	M16	1
M16-120-S32S-C	28.5	32	17.0	120	210	M16	1
M16-175-S32S-C	28.5	32	17.0	175	300	M16	1
M16-020-S32S-C-180	28.5	32	17.0	20	180	M16	2
M16-020-S32S-C-210	28.5	32	17.0	20	210	M16	2
M16-020-S32S-C-300	28.5	32	17.0	20	300	M16	2

Оправки для сменных фрезерных головок (МАТ)



Фрезерование

Е