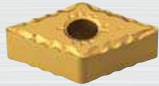


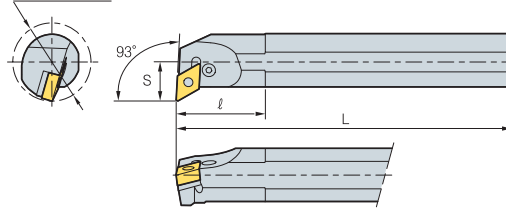
Прижим рычагом через отверстие В

PDUNR/L



DN□□

ØD Минимальный диаметр растачивания

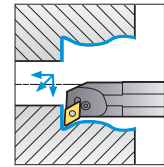


Ød

Рис. 1

Рис. 2

Рис. 3



93°

• Правое исполнение

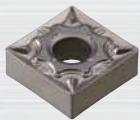
(мм)

| Обозначение | ØD | Ød | H | L | S | ℓ | СМП | Рычаг | Винт | Опорная пластина | Штифт | Ручка ключа | Ключ | Рис. |
|---------------------------|----|----|----|-----|----|----|------------|-------|-----------|------------------|--------|-------------|-------|------|
| S20S-PDUNR/L-11 | 25 | 20 | 18 | 250 | 13 | 30 | DN□□1104□□ | LV3D | VHX0512B | — | — | — | HW20L | 3 |
| S25R-PDUNR/L-11 | 32 | 25 | 23 | 200 | 17 | 35 | | LV3 | VHX0617 | SD317 | SP3 | LSPS3 | HW25L | |
| S32S-PDUNR/L-11 | 40 | 32 | 30 | 250 | 22 | 40 | | LV4B | VHX0821 | SD42 | SP4 | LSPS4 | HW30L | |
| S32S-PDUNR/L-15 | 40 | 32 | 30 | 250 | 22 | 50 | DN□□1506□□ | LV4B | VHX0821 | SD42 | SP4 | LSPS4 | HW30L | |
| S40T-PDUNR/L-15 | 50 | 40 | 37 | 300 | 27 | 50 | | LV4 | VHX0821 | SD42 | SP4 | LSPS4 | HW30L | |
| S50U-PDUNR/L-15 | 63 | 50 | 47 | 350 | 35 | 63 | | LV4B | VHX0821 | SD42 | SP4 | LSPS4 | HW30L | |
| S32S-PDUNR/L-15-3 | 40 | 32 | 30 | 250 | 22 | 50 | DN□□1504□□ | LV4B | VHX0821 | SD42 | SP4 | LSPS4 | HW30L | 1 |
| S40T-PDUNR/L-15-3 | 50 | 40 | 37 | 300 | 27 | 50 | | LV4 | VHX0821 | SD42 | SP4 | LSPS4 | HW30L | |
| A32S-PDUNR/L-15 | 40 | 32 | 31 | 250 | 22 | 50 | | LV4B | VHX0821 | SD42 | SP4 | LSPS4 | HW30L | |
| A32S-PDUNR/L-15-3 | 40 | 32 | 31 | 250 | 22 | 50 | DN□□1504□□ | LV4 | VHX0821 | SD42 | SP4 | LSPS4 | HW30L | |
| S20S-PDUNR/L-11N | 25 | 20 | 18 | 250 | 13 | 25 | DN□□1104□□ | LV3DN | VHX0512BN | — | — | — | HW20L | 3 |
| S25R-PDUNR/L-11N | 32 | 25 | 23 | 200 | 17 | 35 | | LV3AN | VHX0617N | SD317N | SP3N-1 | LSPS3 | HW30L | |
| S32S-PDUNR/L-11N | 40 | 32 | 30 | 250 | 22 | 40 | | LV4BN | VHX0821N | SD42N | SP4N | LSPS4 | HW30L | |
| S32S-PDUNR/L-15N | 40 | 32 | 30 | 250 | 22 | 50 | DN□□1506□□ | LV4BN | VHX0821N | SD42N | SP4N | LSPS4 | HW30L | |
| S32U-PDUNR/L-15N | 40 | 32 | 30 | 350 | 22 | 50 | | LV4BN | VHX0821N | SD43N | SP4N | LSPS4 | HW30L | |
| S40T-PDUNR/L-15N | 50 | 40 | 37 | 300 | 27 | 50 | | LV4BN | VHX0821N | SD43N | SP4N | LSPS4 | HW30L | |
| S50U-PDUNR/L-15N | 63 | 50 | 47 | 350 | 35 | 50 | DN□□1506□□ | LV4BN | VHX0821N | SD43N | SP4N | LSPS4 | HW30L | 2 |
| S32S-PDUNR/L-15-3N | 40 | 32 | 30 | 250 | 22 | 50 | | LV4BN | VHX0821N | SD43N | SP4N | LSPS4 | HW30L | |
| S40T-PDUNR/L-15-3N | 50 | 40 | 37 | 300 | 27 | 50 | | LV4BN | VHX0821N | SD43N | SP4N | LSPS4 | HW30L | |
| A20S-PDUNR/L-11N | 25 | 20 | 18 | 250 | 13 | 25 | DN□□1104□□ | LV3DN | VHX0512BN | — | — | — | HW20L | 3 |
| A25R-PDUNR/L-11N | 32 | 25 | 23 | 200 | 17 | 35 | | LV3AN | VHX0617N | SD317N | SP3N-1 | LSPS3 | HW30L | |
| A32S-PDUNR/L-11N | 40 | 32 | 30 | 250 | 22 | 40 | | LV4BN | VHX0821N | SD42N | SP4N | LSPS4 | HW30L | |
| A32S-PDUNR/L-15N | 40 | 32 | 30 | 250 | 22 | 50 | DN□□1506□□ | LV4BN | VHX0821N | SD42N | SP4N | LSPS4 | HW30L | |
| A40T-PDUNR/L-15N | 50 | 40 | 37 | 300 | 27 | 50 | | LV4BN | VHX0821N | SD43N | SP4N | LSPS4 | HW30L | |
| A50U-PDUNR/L-15N | 63 | 50 | 47 | 350 | 35 | 50 | | LV4BN | VHX0821N | SD43N | SP4N | LSPS4 | HW30L | |
| A32S-PDUNR/L-15-3N | 40 | 32 | 30 | 250 | 22 | 50 | DN□□1506□□ | LV4BN | VHX0821N | SD43N | SP4N | LSPS4 | HW30L | |
| A40T-PDUNR/L-15-3N | 50 | 40 | 37 | 300 | 27 | 50 | | LV4BN | VHX0821N | SD43N | SP4N | LSPS4 | HW30L | |



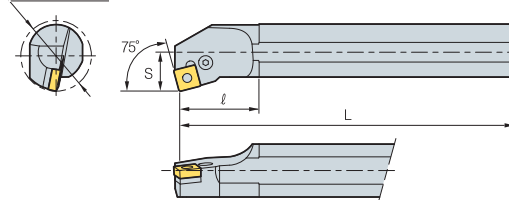
СМП смотреть на стр. B23~B26

PSKNR/L



SN□□

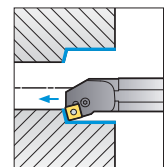
ØD Минимальный диаметр растачивания



Ød

Рис. 1

Рис. 2



75°

• Правое исполнение

(мм)

| Обозначение | ØD | Ød | H | L | S | ℓ | СМП | Рычаг | Винт | Опорная пластина | Штифт | Ручка ключа | Ключ | Рис. |
|-------------------------|----|----|----|-----|----|----|------------|-------|----------|------------------|-------|-------------|-------|------|
| S25R-PSKNR/L-12 | 32 | 25 | 23 | 200 | 17 | 42 | SN□□1204□□ | LV4A | VHX0613A | — | — | — | HW25L | 2 |
| S32S-PSKNR/L-12 | 40 | 32 | 30 | 250 | 22 | 45 | | LV4 | VHX0821 | SS42B | SP4 | LSPS4 | HW30L | |
| S40T-PSKNR/L-12 | 50 | 40 | 37 | 300 | 27 | 50 | | LV4A | VHX0613A | — | — | — | HW25L | |
| A25R-PSKNR/L-12 | 32 | 25 | 23 | 200 | 17 | 42 | SN□□1204□□ | LV4 | VHX0821 | SS42B | SP4 | LSPS4 | HW30L | 1 |
| A32S-PSKNR/L-12 | 40 | 32 | 30 | 250 | 22 | 50 | | LV4 | VHX0821 | SS42B | SP4 | LSPS4 | HW30L | |
| S25R-PSKNR/L-12N | 32 | 25 | 23 | 200 | 17 | 25 | SN□□1204□□ | LV4AN | VHX0613N | — | — | — | HW25L | 2 |
| S32S-PSKNR/L-12N | 40 | 32 | 30 | 250 | 22 | 30 | | LV4N | VHX0821N | SS42N | SP4N | LSPS4 | HW30L | |
| S40T-PSKNR/L-12N | 50 | 40 | 37 | 300 | 27 | 30 | | LV4AN | VHX0613N | — | — | — | HW25L | |
| A25R-PSKNR/L-12N | 32 | 25 | 23 | 200 | 17 | 25 | SN□□1204□□ | LV4AN | VHX0613N | — | — | — | HW25L | |
| A32S-PSKNR/L-12N | 40 | 32 | 30 | 250 | 22 | 30 | | LV4N | VHX0821N | SS42N | SP4N | LSPS4 | HW30L | |
| A40T-PSKNR/L-12N | 50 | 40 | 37 | 300 | 27 | 30 | | LV4N | VHX0821N | SS42N | SP4N | LSPS4 | HW30L | |



СМП смотреть на стр. B28~B34



Точение

В