

FMAC(M)4000

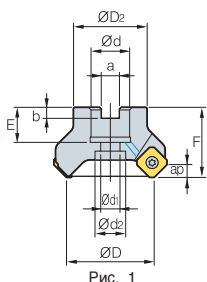


Рис. 1

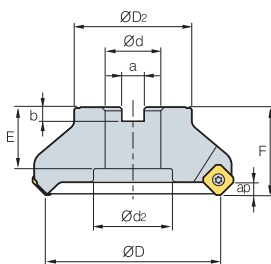


Рис. 2

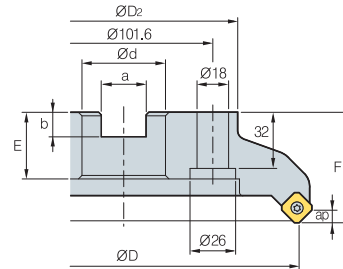


Рис. 3



• AR : 21°
• RR : -17°~12°

(MM)

Обозначение		ØD	ØD ₂	Ød	a	b	E	F	Ød ₁	Ød ₂	ap		Рис.
FMAC(M) 4050HR	3	50	42	22	10.4	6.3	20	40	11	18	6.5	0.4	1
4063HR	4	63	49	22	10.4	6.3	20	40	11	18	6.5	0.6	1
4063HR-M	5	63	49	22	10.4	6.3	20	40	11	18	6.5	0.6	1
4063HR-H	6	63	49	22	10.4	6.3	20	40	11	18	6.5	0.6	1
4080HR	5	80	57	25.4(27)	9.5(12.4)	6(7)	25(23)	50	14	20	6.5	1.1	1
4080HR-M	6	80	57	25.4(27)	9.5(12.4)	6(7)	25(23)	50	14	20	6.5	1.1	1
4080HR-H	8	80	57	25.4(27)	9.5(12.4)	6(7)	25(23)	50	18	20	6.5	1.1	1
4100HR	5	100	67	31.75(32)	12.7(14.4)	8(8)	33(25)	63(50)	18	26	6.5	2(1.6)	1
4100HR-M	7	100	67	31.75(32)	12.7(14.4)	8(8)	33(25)	63(50)	18	26	6.5	2(1.6)	1
4100HR-H	10	100	67	31.75(32)	12.7(14.4)	8(8)	33(25)	63(50)	18	26	6.5	2(1.6)	1
4125HR	6	125	87	38.1(40)	15.9(16.4)	10(9)	35(29)	63	22	32	6.5	3.1	1
4125HR-M	8	125	87	38.1(40)	15.9(16.4)	10(9)	35(29)	63	22	32	6.5	3.1	1
4125HR-H	12	125	87	38.1(40)	15.9(16.4)	10(9)	35(29)	63	22	32	6.5	3.1	1
4160R	7	160	107	50.8(40)	19.0(16.4)	11(9)	38(35)	63	-	-	6.5	4.8	2
4160R-M	10	160	107	50.8(40)	19.0(16.4)	11(9)	38(35)	63	-	-	6.5	4.8	2
4160R-H	16	160	107	50.8(40)	19.0(16.4)	11(9)	38(35)	63	-	-	6.5	4.8	2
4200R	8	200	130	47.625(60)	25.4(25.7)	14	38(32)	63	-	-	6.5	6.1	3
4200R-M	12	200	130	47.625(60)	25.4(25.7)	14	38(32)	63	-	-	6.5	6.1	3
4200R-H	18	200	130	47.625(60)	25.4(25.7)	14	38(32)	63	-	-	6.5	6.1	3

* () Метрическая система

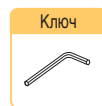
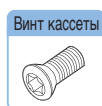
Применяемые СМП

	SEET-MF	SEET-MM	SEET-MA	SEXT-MF	SEXT-MM	SEXT-MR	SEEW	SEEW-W
Обозначение	NCM325 NCM335 NC5330 PC3500 PC3900 PC3400 PC9510 PC215K PD2000 CN2000 CN30	Тв. сплав с покрытием	Кермет	Тв. сплав	Стр.			
SEET	14M4AGFN-MA 14M4AGSN-MF 14M4AGSN-MM	•	•	•	•	•	•	•
SEXT	14M4AGSN-MF 14M4AGSN-MM 14M4AGSN-MR	•	•	•	•	•	•	•
SEEW	14M4AGTN 14M4AGFN-W 14M4AGSN-W 14M4AGTN-W	•	•	•	•	•	•	•

Применяемые оправки

Обозначение	Ød	Оправка с хвостовиком ВТ
FMAC(M) 4050HR-□ 4063HR-□	22	ВТ□□-FMC22-□□
4080HR-□	25.4	ВТ□□-FMA25.4-□□
	27	ВТ□□-FMC27-□□
4100HR-□	31.75	ВТ□□-FMA31.75-□□
	32	ВТ□□-FMC32-□□
4125HR-□	38.1	ВТ□□-FMA38.1-□□
	40	ВТ□□-FMB40-□□
4160R-□	50.8	ВТ□□-FMA50.8-□□
	40	ВТ□□-FMB / FMC40-□□
4200R-□	47.625	ВТ□□-FMA47.625-□□
	60	ВТ□□-FMB60-□□

Комплектующие



FTGA03512

SS42SAF

SHXN0509F

TW15S

HW35L

