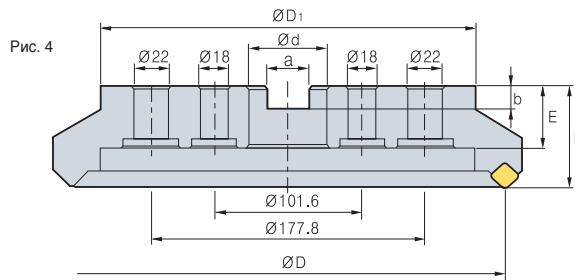
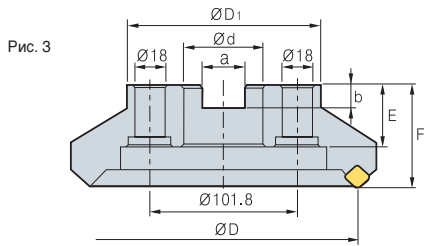
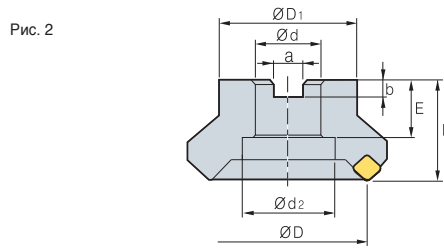
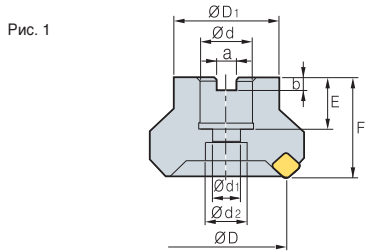


Метрическая система измерений

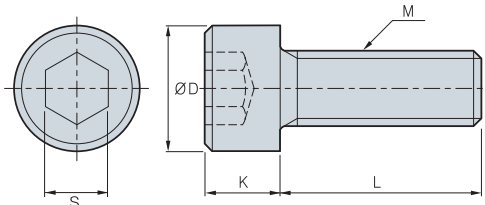
Присоединительные размеры фрез



Размеры фрез (метрическая система измерения)

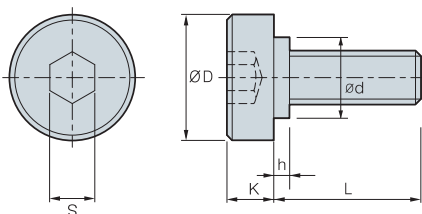
| Размеры, мм | | | | | | | | | | Рис. | Оправки |
|-------------|----|------|-----|----|----|-----------------|-----------------|-----------------|---|--------------|---------|
| ØD | Ød | a | b | E | F | ØD ₁ | Ød ₁ | Ød ₂ | | | |
| 40 | 16 | 8.4 | 5.6 | 18 | 40 | 34 | 9 | 14 | 1 | FMC16, SMA16 | |
| 50 | 22 | 10.4 | 6.3 | 20 | 40 | 42 | 11 | 18 | 1 | FMC22 | |
| 63 | 22 | 10.4 | 6.3 | 20 | 40 | 49 | 11 | 18 | 1 | FMC22 | |
| 80 | 27 | 12.4 | 7 | 22 | 50 | 57 | 14 | 20 | 1 | FMC27 | |
| 100 | 32 | 14.4 | 8 | 28 | 50 | 67 | - | 45 | 2 | FMC32 | |
| 125 | 40 | 16.4 | 9 | 32 | 63 | 87 | - | 56 | 2 | FMB40 | |
| 160 | 40 | 16.4 | 9 | 32 | 63 | 107 | - | - | 2 | FMB40 | |
| 200 | 60 | 25.7 | 14 | 38 | 63 | 130 | - | - | 3 | FMB60 | |
| 250 | 60 | 25.7 | 14 | 38 | 63 | 180 | - | - | 3 | FMB60 | |
| 315 | 60 | 25.7 | 14 | 38 | 63 | 240 | - | - | 4 | - | |

Крепежный винт (исполнение 1)



| Обозначение | ØD | S | K | L | M | Диаметр фрезы |
|-------------|----|----|----|----|------------|---------------|
| SB0825 | 13 | 6 | 8 | 25 | M08 × 1.25 | Ø40 |
| SB1025 | 16 | 8 | 10 | 25 | M10 × 1.50 | Ø50, Ø63 |
| SB1035 | 16 | 8 | 10 | 35 | M10 × 1.50 | Ø50, Ø63(HRM) |
| SB1230 | 18 | 10 | 12 | 30 | M12 × 1.75 | Ø80 |
| SB1245 | 18 | 10 | 12 | 45 | M12 × 1.75 | Ø80(HRM) |
| SB1630 | 24 | 14 | 16 | 30 | M16 × 2.0 | Ø100 |
| SB1645 | 24 | 14 | 16 | 45 | M16 × 2.0 | Ø100(HRM) |
| SB2040 | 30 | 17 | 20 | 40 | M20 × 2.5 | Ø125 |

Крепежный винт (исполнение 2)



| Обозначение | Размеры, мм | | | | | | Диаметр фрезы |
|-------------|-------------|----|----|----|---|----|---------------|
| | D | L | K | S | h | d | |
| M12 X 1.75 | 33 | 28 | 10 | 10 | 2 | 23 | Ø80 |
| M16 X 2 | 40 | 32 | 10 | 14 | 5 | 23 | Ø100 |
| M20 X 2.5 | 50 | 40 | 14 | 17 | 5 | 27 | Ø125, Ø160 |

