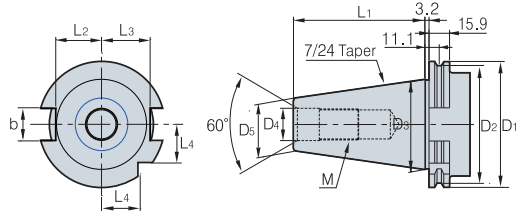


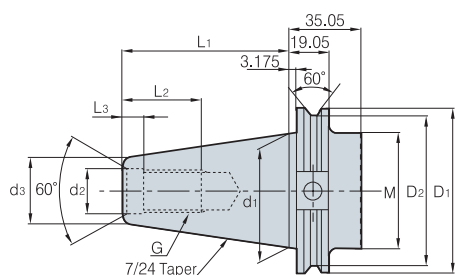
Типы хвостовиков

● DIN 69871



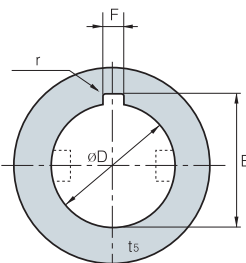
державки No.	D ₁	D ₂	D ₃	D ₄	D ₅	L ₁	L ₂	L ₃	L	b	M
30	50.0	44.3	31.75	13	17.8	47.8	16.4	19.0	33.5	16	M12x1.75
40	63.5	56.2	44.45	17	24.5	68.4	22.8	25.0	42.5	16.1	M16x2
45	82.5	57.2	57.15	21	33.0	82.7	29.1	31.3	52.5	19.3	M20x2.5
50	97.5	91.2	68.85	25	40.1	101.7	35.5	37.7	61.5	25.7	M24x3

● Тип CAT



державки No.	D ₁	D ₂	M	d ₁	d ₂	d ₃	L ₁	L ₂	L ₃	G
CAT40	63.5	56.36	44.45	44.45	16.28	21.84	68.25	28.45	4.78	5/8-11
CAT45	82.55	75.41	57.15	57.15	19.46	27.69	82.55	38.1	4.78	3/4-10
CAT50	98.43	91.29	69.85	69.85	26.19	35.05	101.6	44.45	6.35	1-8

● Посадочные кольца под оправку (KSB3203)



● Тип А

Диаметр	øDH ₇	E	F	r
8	8 ^{+0.015} ₀	8.9 ^{+0.25} ₀	2 ^{+0.16} _{+0.06}	0.4
10	10 ^{+0.015} ₀	11.5 ^{+0.25} ₀	3 ^{+0.16} _{+0.06}	0.4
13	13 ^{+0.018} ₀	14.6 ^{+0.25} ₀	3 ^{+0.16} _{+0.06}	0.6
16	16 ^{+0.018} ₀	17.7 ^{+0.25} ₀	4 ^{+0.19} _{+0.07}	0.6
19	19 ^{+0.021} ₀	21.1 ^{+0.25} ₀	5 ^{+0.19} _{+0.07}	1
22	22 ^{+0.021} ₀	24.1 ^{+0.25} ₀	6 ^{+0.19} _{+0.07}	1
27	27 ^{+0.021} ₀	29.8 ^{+0.25} ₀	7 ^{+0.23} _{+0.08}	1.2
32	32 ^{+0.025} ₀	34.8 ^{+0.25} ₀	8 ^{+0.23} _{+0.08}	1.2
40	40 ^{+0.025} ₀	43.5 ^{+0.3} ₀	10 ^{+0.23} _{+0.08}	1.2
50	50 ^{+0.025} ₀	53.5 ^{+0.3} ₀	12 ^{+0.275} _{+0.095}	1.6
60	60 ^{+0.030} ₀	64.2 ^{+0.3} ₀	14 ^{+0.275} _{+0.095}	1.6
70	70 ^{+0.030} ₀	75.0 ^{+0.3} ₀	16 ^{+0.275} _{+0.095}	2
80	80 ^{+0.030} ₀	85.5 ^{+0.3} ₀	18 ^{+0.275} _{+0.095}	2
100	100 ^{+0.035} ₀	107.0 ^{+0.3} ₀	24 ^{+0.32} _{+0.11}	2.5

● Тип В

Диаметр	øDH ₇	E	F	r
$\frac{1}{2}$	12.70 ^{+0.018} ₀	14.17 ^{+0.25} ₀	2.38 ^{+0.31} _{+0.13}	0.5
$\frac{5}{8}$	15.875 ^{+0.018} ₀	17.74 ^{+0.25} ₀	3.18 ^{+0.31} _{+0.13}	0.8
$\frac{3}{4}$	19.050 ^{+0.021} ₀	20.89 ^{+0.25} ₀	3.18 ^{+0.31} _{+0.13}	0.8
$\frac{7}{8}$	22.225 ^{+0.021} ₀	24.07 ^{+0.25} ₀	3.18 ^{+0.31} _{+0.13}	0.8
1	25.40 ^{+0.021} ₀	28.04 ^{+0.25} ₀	6.35 ^{+0.31} _{+0.13}	1.2
$1\frac{1}{4}$	31.750 ^{+0.025} ₀	35.18 ^{+0.25} ₀	7.94 ^{+0.32} _{+0.14}	1.6
$1\frac{1}{2}$	38.10 ^{+0.025} ₀	42.32 ^{+0.25} ₀	9.53 ^{+0.89} _{+0.25}	1.6
$1\frac{3}{4}$	44.450 ^{+0.025} ₀	49.48 ^{+0.25} ₀	11.11 ^{+0.89} _{+0.25}	1.6
2	50.80 ^{+0.03} ₀	55.83 ^{+0.25} ₀	12.7 ^{+0.89} _{+0.25}	1.6
$2\frac{1}{2}$	63.50 ^{+0.03} ₀	69.42 ^{+0.25} ₀	15.81 ^{+0.89} _{+0.25}	1.6
3	76.20 ^{+0.03} ₀	82.93 ^{+0.25} ₀	19.05 ^{+0.89} _{+0.25}	2.4
$3\frac{1}{2}$	88.90 ^{+0.035} ₀	98.81 ^{+0.25} ₀	22.23 ^{+0.89} _{+0.25}	2.4
4	101.60 ^{+0.035} ₀	111.51 ^{+0.25} ₀	25.4 ^{+0.89} _{+0.25}	2.4
$4\frac{1}{2}$	114.30 ^{+0.035} ₀	125.81 ^{+0.25} ₀	25.58 ^{+0.89} _{+0.25}	3.2
5	127.0 ^{+0.04} ₀	140.08 ^{+0.25} ₀	31.75 ^{+0.89} _{+0.25}	3.2

